

**Viola I**

Ф. Дружинин

***SINFONIA A DUE***

*для двух альтов*

F. Druzhinin

***SINFONIA A DUE***

*For Two Violas*

## 2

*In memory of Romain Gary*

# SINFONIA A DUE

## for Two Violas

Ф. Дружинин  
F. Druzhinin  
(1987)

Violin Concerto in D major, Op. 35, by Pyotr Ilyich Tchaikovsky (1987)

Violin I

3/4

*f*

5

*ff*

*f*

pizz.

10

1

arco

14

accel.

rit.

17

2

a tempo

rit.

sostenuto

sul ponticello

*p*

*pp*

20

3

Tempo I ♩ = 80

Sul G vibr.

*f* espressivo molto

Sul D

Sul A

poco a poco dim.

25

*pp*

28

4

*f*

3

rit.

dim.

*pp*

, a tempo

*ff*

31

5

cresc. e accel.

*f*

*p*

34

Allegro moderato ♩ = 80

3

*ff*

# Viola I

3

38 6 *mp*

42 *f*

46 *mp* *dim.* *poco rit.* *pp*

49 7 *a tempo* *mp*

53

57 *cresc.*

60 8 *poco piu mosso* *f*

62 *f*

65

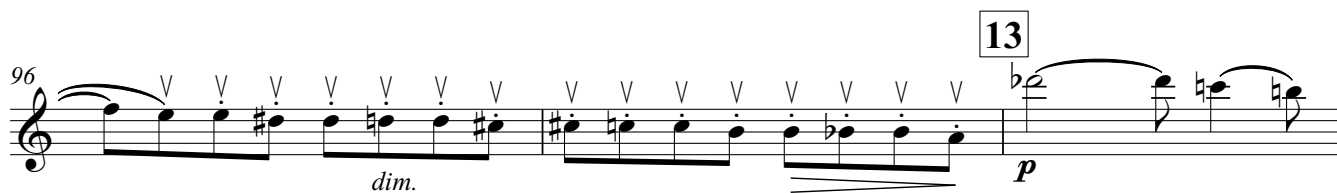
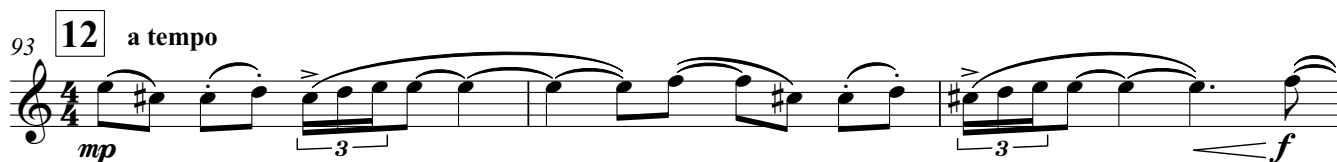
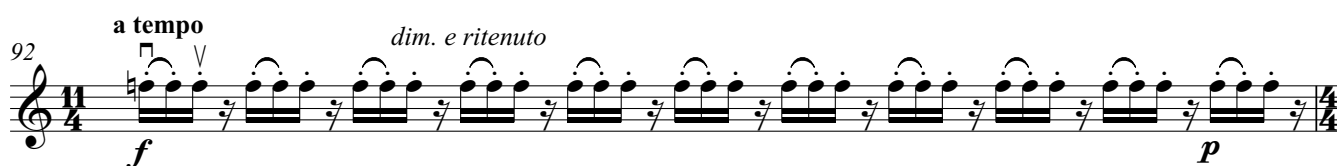
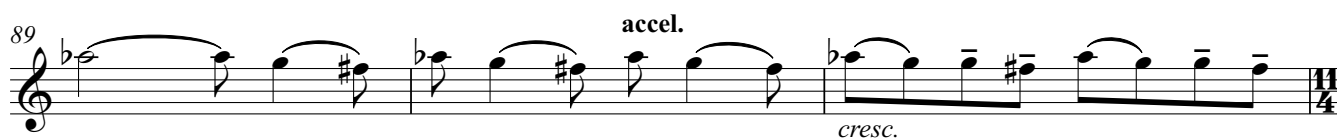
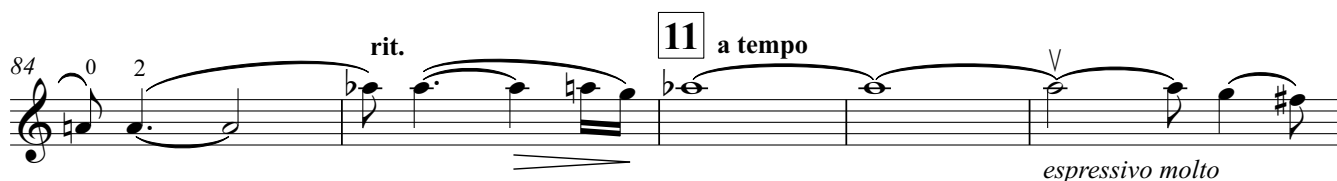
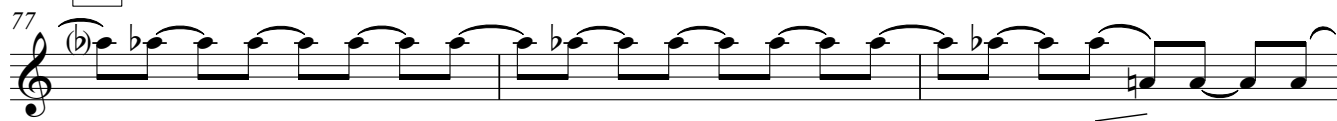
69 9 *poco rubato*

73 *rit.* *dim.* *pp*

# Viola I

4

10



# Viola I

5

**14** a tempo

103 *f*

106

109 **15**

112 *dim.* *p dolce*

115 *cresc.* *f* **16**

119

122 *rubato* *a tempo* *rubato*

124 *a tempo* *rit.* *diminuendo* *pp*

125 **17** *p* *3* *dim.*

129 *rit.* *pp* *mp* **18** (a tempo poco meno mosso)

# Viola I

6

132 *mp espressivo*

135 **19**

138

142 **20** *cresc. sempre e accel.*

146 *rit.* *rubato* *ff* *5* *attacca*

## II. Menuett

Tempo di minuetto ♩ = 80

*mf*

155 **1** *poco rit.*

162 *a tempo* **2**

168 *poco rit.*

174 *a tempo* **3** *f*

# Viola I

7

179 *p* *f* *p* *mf* 3

184 4 vibr.

191 Sul C *mf* *pp* *p* 5

198 poco rit. a tempo

204 6 Piu mosso ♩ = 80 *f* *tr*

208 accel. rit. 7 3

213 *tr*

216

220 8 *p* *tr* *dolce*

225 9 *p*

230 10 *cresc.* *tr* *f* *dim.* *p* *rit.*

# Viola I

8

**11** Tempo I ♩ = 80 rit.

**12** animato

<sup>\*)</sup>

<sup>8va</sup>

<sup>(8)</sup>

<sup>(8)</sup>

**13** *sf* *tr* *mf* *tr* *p* *rit.* *a tempo* **6**

**14** *p* *espr. molto, ma non forte*

**15** *dolce* *dim.*

**16** *rit.* *a tempo* *p*

**17** *espr.* *pp* *f*

<sup>\*)</sup> Начиная с этого места абсолютная высота нот не играет никакой роли.  
From this place the absolute pitch doesn't make any difference.

<sup>\*\*)</sup> За подставкой.  
Over the bridge.



# Viola I

9

314 *f* *dim.* sul ponticello **18**

323 *f* *cresc. poco a poco* **19**

330 *ff* **6** (Vi -

333 *mf* **Tempo di minuetto** ♩ = 80

339 **20** *poco rit.*

346 *a tempo* **21**

352 *poco rit.* *a tempo*

359 *f* *p* *f* **22**

365 *p* *mf* *3* **23** *vibr.*

371 *mf* *pp* **24** *Sul C*

- de) **24** *meno mosso* *a tempo (I)*

377 *rit. a tempo* *p*

382 *p*

## Viola I

## III. Finale

**Sostenuto** ♩ = 80

*f*

*rit.*

**a tempo**

391 *ff*

395 *f* **poco accel.**

398 *rit.* **ff** *f* *f*

401

404 *espressivo* *dim.*

407 *p* *pp* *rit.* *ppp*

**2** **Allegro moderato** ♩ = 80

411 *mf*

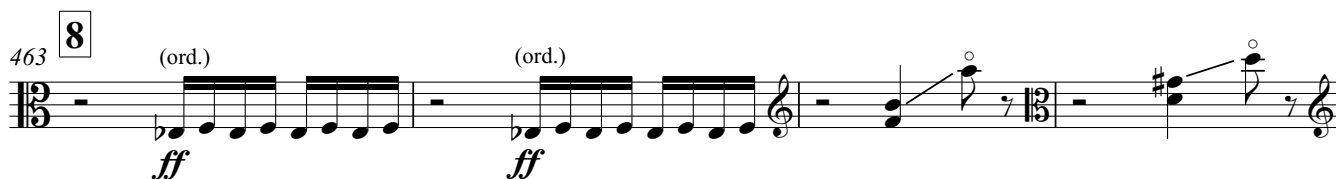
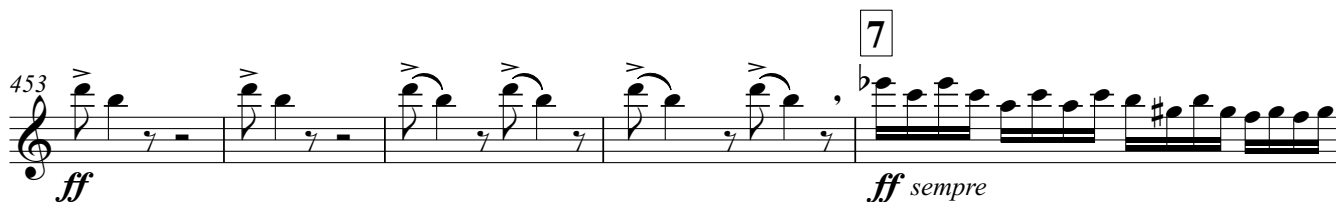
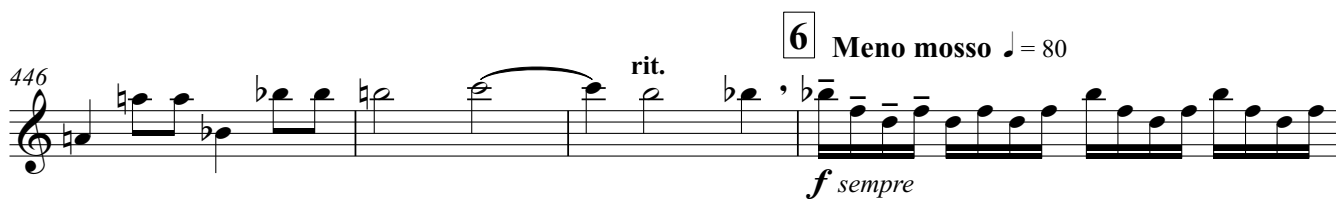
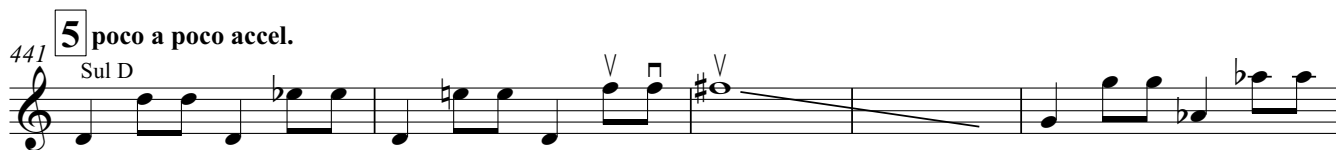
416

421 *p* **3**

425

# Viola I

11



# Viola I

12

470 **9** Tempo di Tango ♩ = 80  
2

*f* espressivo *p*

475 *cresc.* accel.

479 rit. a tempo *f*

483 accel. rit.

486 a tempo *f*

490

493 **10**

497

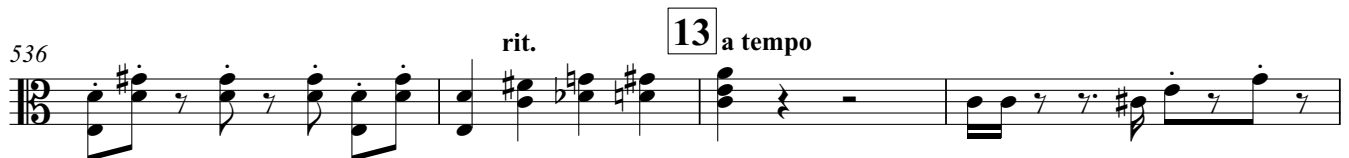
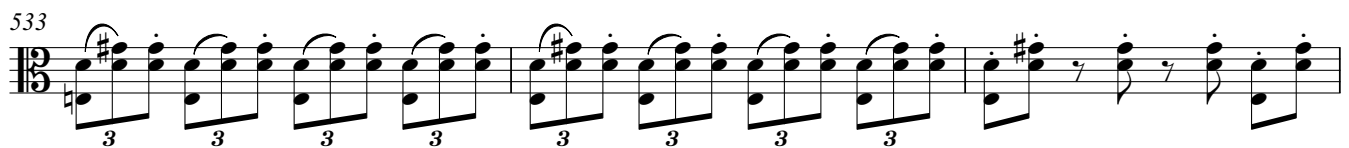
499 tr~~~~~

504 rit. **11** a tempo *ff*

507 *mp*

# Viola I

13



# Viola I

14

548 *mp* espressivo

552

557 *rit.* **Tempo I** ♩ = 80 *f*

562

566 **15** *f* *mf*

569

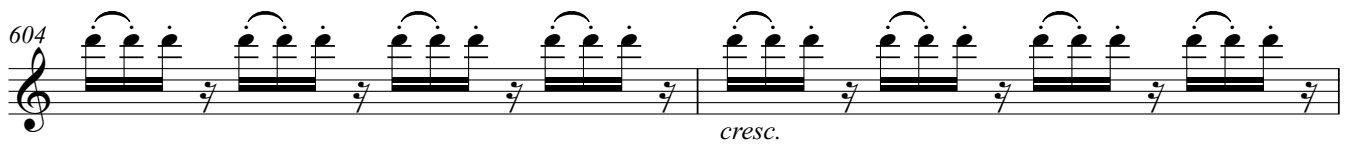
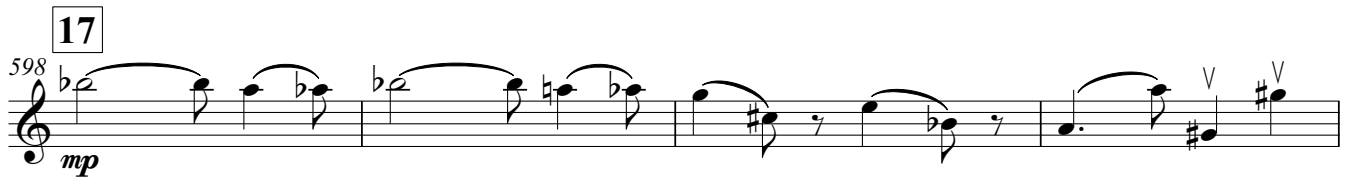
572

575 **16** **Piu vivo** ♩ = 80 *p*

578

# Viola I

15



# Viola I

16

**19** a tempo

614 ord. *p* non vibr. *cresc.*

618 *f*

621

623 **20**

626 *cresc. sempre*

628

**21** 630 *ff*

633 **22** *fff* en s'etouffant *espr. molto, ma non forte*

638

641

645

649 **23** a due corde *p*



# Viola I

17

652

655

658

661

663

666

668

670

676

681

685

690

694

dim. sempre